



REGENT

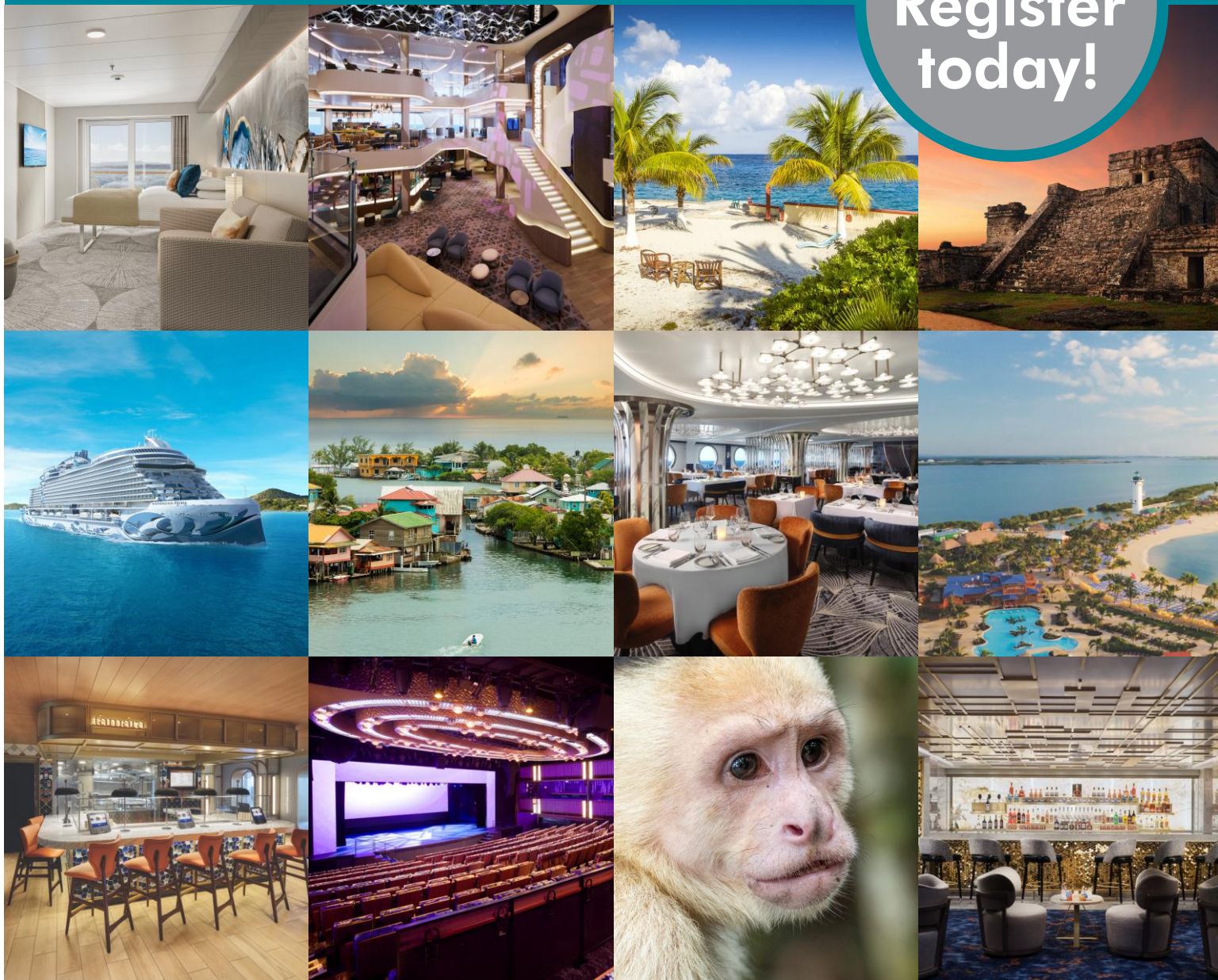
Travel  
club

# NORWEGIAN PRIMA CARIBBEAN CRUISE

February 8-16, 2024

Venture across the Western Caribbean aboard the new *Norwegian Prima*, visiting tropical locales in Mexico, Belize, and the Bay Islands of Honduras along the way! Explore the lasting influences of ancient Mayan culture; encounter fascinating creatures such as dolphins and capuchin monkeys; and revel in the endless sun, sand, and crystal-clear waters. From the cuisine to the culture and the history to the wildlife, this adventure is paradise from ship to shore!

Space is limited.  
**Register  
today!**







#### DAY 1 THURSDAY, FEBRUARY 8

#### HOUSTON, TX

Today we will meet at the Springfield airport for our flight to **Houston, TX**, and transfer to our centrally located hotel. Settle in, freshen up, and enjoy the remainder of the day at your leisure to explore Houston. There are some extraordinary dining options to choose from once you've worked up an appetite!

#### DAY 2 FRIDAY, FEBRUARY 9

#### GALVESTON, TX

(Dinner)

Enjoy a leisurely morning before we transfer to the pier in Galveston to **board the Norwegian Prima for the next seven nights**. We'll settle into our staterooms and explore everything offered aboard this first ship in a new class designed to elevate expectations. There are more than two dozen restaurants, bars, and lounges to try; entertainment ranging from a Broadway sensation to stand up; and a number of innovative experiences that can only be found aboard the *Prima*!

#### DAY 3 SATURDAY, FEBRUARY 10

#### AT SEA

(Breakfast, Lunch, Dinner)

Experience life at sea and take advantage of the countless opportunities on board for shopping, dining, and entertainment. Capture a breathtaking photo as you walk over water on the ship's glass bridge, stroll through the seaside sculpture garden, or enjoy a show. Dance to the Disco Queen's greatest hits during a performance of the Tony Award-nominated *Summer: The Donna Summer Musical*, and be entertained by Noise Boys' energetic beat boxing. Gaze into the wide open in the contemporary Observation Lounge, appreciate a good cigar at The Humidor Cigar Lounge, or try a crafted bottled cocktail at the Belvedere Bar. Be sure to check out Indulge, the new food court concept where you can dine around the world with cuisine from India to Italy to Latin America and more! Plus, the specialty restaurants will not disappoint! Taste the essence of Greece at Palomar, see Teppanyaki in a whole new light at Hasuki, enjoy premium cuts at Cagney's Steakhouse, or celebrate traditional Mexican flavors with a modern twist at Los Lobos.

#### DAY 4 SUNDAY, FEBRUARY 11

#### COSTA MAYA, MEXICO

(Breakfast, Lunch, Dinner)

**Costa Maya** is a coastal paradise in the Yucatan featuring stunning beaches with soft sand and blue skies. The region is rich with archaeological sites and is the perfect place to check out ancient Mayan ruins. Optional shore excursions focused on Mayan history, culture, and landmarks will have you experiencing the mysterious ruins of Chacchoben; learning about the Mayan influence on life in Mexico today; or being immersed in the rituals, dances, and food of the Mayans. Nature lovers won't want to miss the opportunities to swim with dolphins, snorkel with tropical fish, raft in a picturesque eco-park, or take a dip in a Mayan cenote. Cruise the surrounding waters via catamaran or glass-bottom boat, or explore on land via Segway or Jeep!

#### DAY 5 MONDAY, FEBRUARY 12

#### HARVEST CAYE, BELIZE

(Breakfast, Lunch, Dinner)

Belize is ideal for eco-tourism. With diverse ecology consisting of jungles, rainforests, swamps, coral reefs and so on, you will find solace and adventure in the stunning landscape of **Harvest Caye**. Adventure seekers have plenty of optional excursions to choose from ranging from ziplining, parasailing, and deep-sea fishing to jungle river rafting, jet skiing, and snorkeling on Belize's Barrier Reef. Journeys into the saltwater mangrove estuaries or along Monkey River will introduce you to the area's wildlife, while visits to organic chocolate and spice farms will stimulate your senses. Harvest Caye also offers a unique opportunity to meet a renowned Mayan shaman and watch as she conjures medicines from jungle plants.

#### DAY 6 TUESDAY, FEBRUARY 13

#### ROATÁN, BAY ISLANDS

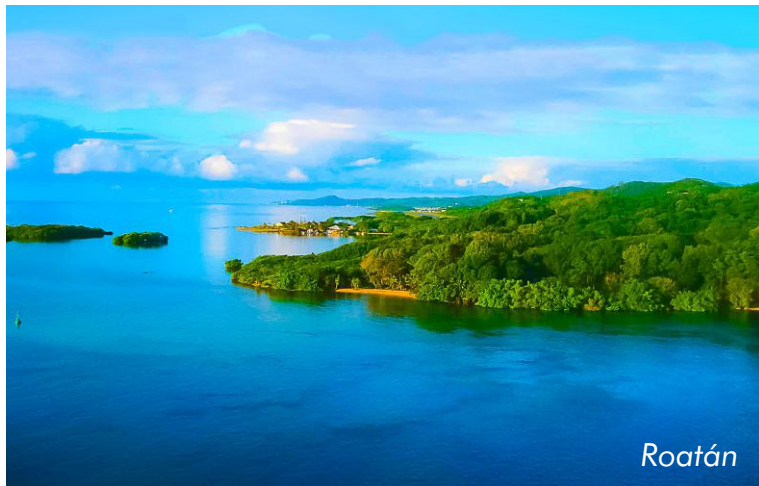
(Breakfast, Lunch, Dinner)

Beautiful and unspoiled, **Roatán** is a peaceful, eco-tourist's dream just thirty miles off the coast of Honduras. Teeming with marine life and home to some of the best pillar coral in the Caribbean, the pristine Honduran Reef is a diver's paradise. Spend the day relaxing on a white-sand beach or lounging poolside at one of the area's private islands and beach clubs. Sample tropical beers at a brewery, ride through the jungle aboard an ATV, or see a coral reef from a semi-submarine. Preserves and nature parks will have you interacting with monkeys and macaws, and West End Village is the perfect spot to do a little shopping!





Harvest Caye



Roatán

#### DAY 7 WEDNESDAY, FEBRUARY 14

#### COZUMEL, MEXICO

(Breakfast, Lunch, Dinner)

The island of **Cozumel** off the tip of the Yucatan Peninsula continues to be known for its fantastic fishing, snorkeling, and diving opportunities. And despite the growth of tourism in recent years, the island and its only town, San Miguel, retain much of their original warmth and charm. Wildlife encounters are popular here, with opportunities to interact with dolphins, sting rays, sea lions, and manatees available. Discover more about two of Mexico's famous products – chocolate and tequila – with peeks into their history and production today. For more culinary adventures, consider making salsa and learning to salsa dance, joining in a cooking class, or heading to a beachside fish cookout. A day at Chankanaab National Park offers everything from powdery beaches and crystal-clear waters to wildlife and ancient ruins. Whether you simply want to relax on a beautiful beach or you're looking for something a little more adventurous like exploring an underground river, Cozumel offers so much to see and do!

#### DAY 8 THURSDAY, FEBRUARY 15

#### AT SEA

(Breakfast, Lunch, Dinner)

After four full days of exploring, take advantage of another day at sea to recharge and continue enjoying this new ship! Settle into a lounge chair by the pool, get pampered at the spa, or pick up a souvenir in one of the shops. It's our last night on board, so be sure to grab a table in a restaurant you have been wanting to try!

#### DAY 9 FRIDAY, FEBRUARY 16

#### HOME

(Breakfast)

Following breakfast we will disembark in Galveston and transfer to the airport for our flight home.



Grinding chocolate



Chacchoben



Cozumel



Norwegian Prima



## INCLUSIONS

- Round-Trip Air From Springfield to Houston
  - Private Motorcoach Transportation to Hotel/Pier/ Houston Airport
  - 1 Night's Accommodations on Land
  - All Onboard Meals
  - 7-Night Cruise in Stateroom Category of Choice
  - Taxes & Gratuities for Included Services on Land & Cruise
  - Porter Service of One Bag Per Person at Hotel
  - Professional Tour Manager Beginning in Houston
  - Balcony Guests Pick One Amenities Package
- PACKAGE 1:**
- Premium Beverage Package (Includes drinks up to \$15 each; excludes \$138.60/person gratuities)
  - Ultimate Dining Package (2 nights' dining in specialty restaurants; excludes \$15.80/person gratuities)
  - 250-Minute Internet Package (Per stateroom)
  - \$50 Shore Excursion Credit (Per stateroom, per port)
- PACKAGE 2:**
- \$50 Shore Excursion Credit (Per stateroom, per port)
  - 250-Minute Internet Package (Per stateroom)
  - 10-Photo Package (Per stateroom)
  - \$100 Onboard Credit (Per stateroom)
- Inside Guests Pick Two Amenities From One of the Above Packages

Not included in the price of this tour: local airport transfers, meals other than those listed on the itinerary, beverages other than tea/coffee/water (in restaurants only) on board (unless beverage package is chosen), drinks over \$15 each, beverage and dining package gratuities, items of a personal nature/souvenirs, personal services on board such as spa or hair-styling, shore excursions, excursion driver/guide gratuities, phone calls and faxes from hotel/ship, travel protection plan, passport fees, visa fees (if applicable), fees related to any COVID-19 requirements for this destination, current baggage fees at the airport as assessed by the airline, and any service not listed in the above inclusions.

### Activity Level: Minimal to Moderate

In order to participate in this tour, **you must:**

- Be able to walk/stand 2-3 hours at a time at an easy pace in all weather conditions
- Be able to maneuver some stairs, inclines, and uneven surfaces without assistance

**DOCUMENTATION:** Each U.S. citizen must have a valid passport through August 16, 2024, to participate. If you don't have a passport, call our office and we'll tell you how to apply for one. Holders of non-U.S. passports have different entry requirements. Please NOTE: Due to airline security measures, your passport name must match your airline ticket name and your tour reservation name or you may be denied aircraft boarding.

**OPTIONAL TRAVEL PROTECTION PLAN:** Regent Bank recommends that you purchase a Travel Protection Plan to help protect you and your travel investment against the unexpected so you can relax and enjoy your trip. Participants may purchase this coverage from the provider of your choice. For your convenience, we offer a Travel Protection Plan, 360° Group Premier provided by Travel Insurance Services, that helps provide coverage for trip cancellation/interruption, trip delay, baggage loss, theft or damage, medical expense and emergency evacuation coverage, and more. For more information, please see the product flyer included with this brochure. If you would like to purchase the offered plan, please check the applicable box on the registration form. Please Note: The plan cannot be purchased after final payment. To view/download the Policy, which provides the full coverage terms and details, including limitations and exclusions, go to: <https://policy.travelexinsurance.com/GPB-0521>. To view state specific fraud warnings, visit: <https://www.travelexinsurance.com/company/fraud-warning>. The purchase of this product is not required in order to purchase any other travel product or service. Your travel retailer might not be licensed to sell travel insurance and will only be able to provide general information about the product. An unlicensed travel retailer may not answer questions about the terms and conditions of the insurance offered and may not evaluate the adequacy of your existing insurance coverage. The products being offered provide insurance coverage that only applies during your covered trip. You may have insurance coverage from other sources that provide similar benefits but may be subject to different restrictions depending upon the coverage. You may wish to compare the terms of the travel policy offered through Travel Insurance Services, Inc. CA Agency License #0D10209. Travel Insurance is offered on behalf of and under the direction of Travel Insurance Services. Travel Insurance is underwritten by Berkshire Hathaway Specialty Insurance Company; NAIC #22276. 7D4

**CANCELLATION:** Full refund of all monies is made if cancellation is received in writing to Regent Bank prior to final payment, less the non-refundable 3% credit card transaction fee (if a credit card is used). A 100% fee is charged if the cancellation occurs between final payment and departure. If the reason for cancellation is due to a medical or other reason that is covered by Travel Protection, you may be eligible for reimbursement for such fees from your Travel Protection Plan provider.

**TRAVELERS WITH SPECIAL NEEDS:** You must advise Star Destinations, Inc. (SDI) at the time of registration of any disability requiring special attention. SDI will make reasonable efforts to accommodate the special needs of travelers. The Americans with Disabilities Act is applicable only in the U.S., and accommodations outside the U.S. may be more limited. Travelers requiring assistance are required to be accompanied by a companion who is capable of, and totally responsible for, providing the assistance. Neither SDI personnel nor its suppliers may lift or physically assist with travelers' special needs including, but not limited to, walking, dining, or other routine activities. Travelers thinking they may need assistance should call SDI to determine what accommodations may reasonably be provided. Arrangements at an additional cost are the financial responsibility of the traveler.

**TERMS & CONDITIONS:** Star Destinations, Inc. (SDI) acts as an agent for suppliers such as airlines, hotels or activities to provide you with the travel services and accommodations. Although great care is taken in choosing suppliers, we are unable to control them and therefore cannot be held responsible or liable for their acts or omissions. Should a contracted supplier be unable to perform required services, SDI reserves the right to substitute advertised services with similar services. SDI is not responsible for any claims, losses, damages, costs or expenses arising out of injury, accident or death, damage, loss, trip delay or delay of baggage, or other inconvenience resulting from mechanical breakdowns, fire, theft, civil disturbances, government actions, weather, and other factors beyond our control. In the case of a pandemic or worldwide disturbance that interrupts or cancels your planned tour, SDI will do everything possible to retrieve any refundable components of your tour but cannot be held responsible for any non-refundable portions of the tour. In addition, SDI reserves the right to vary the tour price advertised or printed to cover any increase in air fare, volatile fuel prices, government taxes and charges, exchange rate fluctuations, or other tour-related tariffs or newly announced travel costs. In the current travel environment, pricing may be increased due to unexpected requirements for health and safety of tour members. Due to infectious diseases, including COVID-19, destination areas may implement restrictions and requirements that may add additional costs beyond our control. Be aware that any public interaction carries a risk of exposure to infectious diseases. Travelers assume personal risk upon tour registration, and SDI cannot be held responsible in the event of infectious disease exposure. If you request a variation or change to your booking, SDI may choose to accept or reject that request. If accepted, you are responsible for any fees associated with it. If the minimum number of passengers required to operate the tour is not met, SDI reserves the right to cancel the tour.

It is the sole discretion of SDI to refuse transport to any passenger, or require any passenger to leave the tour, if it is reasonably believed that the passenger (1) is dangerous to others or to himself or herself; (2) is engaged in, or is threatening to engage in behavior that may adversely affect the safety, security, enjoyment, or well-being of other passengers, including behavior that is disruptive, verbally or physically abusive, obnoxious, harassing, or obscene; or (3) has failed or refused to follow SDI's rules and procedures or the instructions of its representatives. In the event a passenger is removed, such passenger may be left at any location without any liability to SDI or its representatives. SDI shall not be required to refund any portion of the price paid by any passenger who is removed, nor shall SDI be responsible for any further expenses incurred by the passenger. SDI shall be entitled to recover from the passenger any costs or expenses incurred by SDI or its representatives in the removal of the passenger or the exercise or enforcement of this clause.

## TOUR PRICING\*

Per Person  
Double Occupancy

(14 available)	<b>Cat. IB</b>	Inside Stateroom (160-254 sq ft)**	<b>\$2,745</b>
(24 available)	<b>Cat. BA/BB</b>	Balcony Stateroom (231-358 sq ft)**	<b>\$3,059</b>

\*Tour cost subject to 3% credit card transaction fee.  
\*\*Staterooms subject to availability at time of registration.

**Non-member price: add \$125**

## OPTIONAL TRAVEL PROTECTION

Regent Bank **RECOMMENDS** all travelers purchase a Travel Protection Plan. For your convenience, we offer a Travel Protection Plan provided by Travel Insurance Services:

**per person, double**

Cat. IB (member with any two amenities; non-member with any two amenities, except the beverage package) - \$280

Cat. IB (non-member with beverage package) - \$370

Cat. BA/BB (member or non-member with package 1 or 2) - \$370

(Payment may be sent with your deposit or with final payment to Regent Bank)

Travel Protection Plan may be purchased any time before or with final payment to Regent Bank.

To view state specific fraud warnings, visit: <https://www.travelexinsurance.com/company/fraud-warning>. Travel Insurance Services Inc. ("Travel Insurance") maintains an updated list of alerts and financial defaults on its website available at <https://www.travelexinsurance.com/customer-service/travel-alerts/travel-supplier>.

Visit <https://travelexinsurance.com/docs/ny-phn-covid-19-comp> to view a special notice for NY residents regarding coverage related to COVID-19. Travel Insurance Services, Inc. CA Agency License #0D10209. Travel Insurance is underwritten by Berkshire Hathaway Specialty Insurance Company; NAIC #22276. 7I6

**A \$500 deposit per person is required with your registration form in order to reserve your spot:**

**FINAL PAYMENT IS DUE:  
OCTOBER 2, 2023**

For further information or questions, please contact:

**Cindy Harris at (417) 370-6772**  
or [charris@regent.bank](mailto:charris@regent.bank)



# NORWEGIAN PRIMA

## OCEAN BOULEVARD

The ocean has never been closer. Discover all the breathtaking experiences along Ocean Boulevard as you enjoy 360° of stunning views and sea breezes. Walk across water on the glass bridge, swim up to the horizon on Infinity beach, and explore so much more.



### Infinity Beach

Sit back, relax, and enjoy the stunning views. Or swim up to the horizon in one of the infinity pools, designed to blend into the ocean.



### The Concourse

Head over to The Concourse to admire the multi-million dollar, interactive sculpture garden.



### Oceanwalk

It'll feel like you're walking over water with the sea at your feet. Take a moment to take in the view or capture a photo on this glass walkway.



### La Terraza

Grab a book and a drink and take it easy. This lounge space is designed to be both spacious and intimate, allowing you to relax in peace.

## INDULGE FOOD HALL



### Nudls

From Thai to Italian, Chinese and more, Nudls brings you the best of noodle dishes from around the world. *(complimentary dining)*



### Starbucks

Whether you're craving a Caramel Macchiato, Teavana® Iced Green Tea Lemonade or Cappuccino, stop by for your favorite beverage.



### Latin Quarter & Tapas Truck

Enjoy a fiesta of flavors infused into every delicious bite at The Latin Quarter and the Tapas Truck. *(complimentary dining)*



### The Garden

Go green with a custom salad with the freshest ingredients or order a delicious pre-made option. *(complimentary dining)*



### Coco's

Indulge in your favorite chocolate temptations, including truffles, ice cream, pralines, and more. *(specialty dining)*



### Q Texas Smokehouse

Dig into mouth-watering barbecue short ribs, chicken, brisket, and classic southern breakfast. *(complimentary dining)*



### Seaside Rotisserie

Savor a wide range of rotisserie-style meats cooked to perfection over a spit. *(complimentary dining)*



### Tamara

Spice up your day or evening with a wide variety of classic Indian dishes offered at Tamara. *(complimentary dining)*

## COMPLIMENTARY DINING



### The Local Bar & Grill

The Local Bar & Grill offers classic pub fare in a relaxed atmosphere. With popular dishes like the Reuben Sandwich and Fish n' Chips, The Local Bar & Grill has all your favorite comfort foods.



### Surfside Café

Whatever you're craving, chances are you will find it here. This complimentary buffet serves up plentiful options for breakfast, lunch and dinner.



### Hudson's

Hudson's offers stunning, 270-degree views and a mouth-watering menu. Prepare to be wowed by the specially curated, modern, and updated classic dishes made with the freshest ingredients.



### The Commodore Room

Fine dining in a comfortable, refined environment with an extensive menu of deliciously fresh flavors.



## Specialty Dining

### Food Republic

Travel somewhere new with every delicious bite at Food Republic. Savor a fusion of foods and cultures from around the globe.



### Onda by Scarpetta

Indulge in a modern Italian culinary experience from Scarpetta's signature pastas like the famous Spaghetti Tomato & Basil to unique, mouthwatering seafood creations.



### Palomar

Explore the best flavors of the Med. Seafood is the star attraction here, with European essence.

### Hasuki

Sit at a lively shared table as a skillful chef perfectly prepares shrimp, steak, chicken and fried rice on a large steel grill.



### Cagney's Steakhouse

Premium cuts are the standard at our American steakhouse. Don't forget to order the made-from-scratch jumbo lump crab cakes and the famous Parmesan dusted truffle fries.



### Le Bistro

From savory bites to classic delights, Le Bistro offers a rich French experience.

### Los Lobos

Celebrate traditional Mexican flavors with a modern twist.

## ACCOMMODATIONS

### IB Inside Cabin 160-254 sq ft

Style meets sophistication in modern staterooms that offer comfort and amenities like TV and more.



### BA/BB Balcony Cabin 231-358 sq ft (Balcony: 45-69 sq ft)

See the world from your room. Floor-to-ceiling glass doors open to your own private balcony – and breathtaking views.



## Bars/Lounges

### Whiskey and Cigars

Grab a whiskey at the **Whiskey Bar** or appreciate a good cigar and a great drink at **The Humidor Cigar Lounge**.



### Crafted Cocktails

The contemporary **Belvedere Bar** offers crafted bottled cocktails. The exciting new **Metropolitan Bar** is your place for crafted cocktails, wine, or the classics.



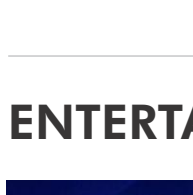
### Drinks + Fun

Play video poker at the **Penrose Bar**, celebrate your victory on the racetrack at the **Speedway Bar**, or go from swimming to sipping at the **Waves Pool Bar**.



### Spectacular Views

Gaze across the sea with a drink in hand in the **Observation Lounge**.



## ENTERTAINMENT



### Summer: The Donna Summer Musical

Dance to the Disco Queen's greatest hits as you journey through the amazing life of Donna Summer. From breaking barriers to the ultimate stardom, it's a spectacular ride that highlights a legendary Prima Donna.



### Noise Boys

This tap dancing, beat-boxing show will have you on the edge of your seat tapping along to energetic performances by award-winning beat boxers.



### Prima Theater & Club

Welcome to the first venue in the world that transforms from three-story theater to spectacular Vegas-style nightclub. Spin the legendary wheel on The Price Is Right during the day. Then enjoy a fantastical late-night party with live DJs and cutting-edge light shows.



### Comedy & Music

Tickle your funny bone with side-splitting stand up at The Improv At Sea. Or jam out to rock and roll hits at Syd Norman's Pour House as the rollicking house band takes you back to rock's glory days.

# NORWEGIAN PRIMA CARIBBEAN CRUISE



For further information or questions, please contact:

**Cindy Harris at (417) 370-6772**  
or [charris@regent.bank](mailto:charris@regent.bank)

Travel arrangements  
provided by



**February 8-16, 2024**

## PASSENGER INFORMATION (1st Traveler)

Full name must be exactly as it appears on your passport or passport application.  
Passport information may be sent later if you have yet to obtain a passport.

First Name: \_\_\_\_\_

Middle Name(s): \_\_\_\_\_

Last Name(s): \_\_\_\_\_

Preferred Name: \_\_\_\_\_ Gender (circle one): M F

Address: \_\_\_\_\_

City: \_\_\_\_\_ State: \_\_\_\_\_ Zip: \_\_\_\_\_

Preferred Phone: \_\_\_\_\_

Email: \_\_\_\_\_

Passport #: \_\_\_\_\_

Passport Expiration Date: \_\_\_\_\_ / \_\_\_\_\_ / \_\_\_\_\_  
month / day / year

Date of Birth: \_\_\_\_\_ / \_\_\_\_\_ / \_\_\_\_\_  
month / day / year

Dietary Needs: \_\_\_\_\_

Additional Special Requests/Needs: \_\_\_\_\_

Preferred Airport: \_\_\_\_\_

Emergency Contact: \_\_\_\_\_

Relationship: \_\_\_\_\_

Emergency Contact's Phone: \_\_\_\_\_

**Regent Bank RECOMMENDS all travelers purchase a Travel Protection Plan. For your convenience, we offer a Travel Protection Plan provided by Travel Insurance Services.**

- ☐ **Yes, I would like to purchase the offered plan (per person, double).**  
Cat. IB (member with any two amenities; non-member with any two amenities, except the beverage package) - \$280  
Cat. IB (non-member with beverage package) - \$370  
Cat. BA/BB (member or non-member with package 1 or 2) - \$370  
(Payment may be sent with your deposit or with final payment to Regent Bank)
- ☐ **No, I decline the offered plan.**

To view state specific fraud warnings, visit: <https://www.travelexinsurance.com/company/fraud-warning>.  
Travel Insurance Services Inc. ("Travel Insurance") maintains an updated list of alerts and financial defaults on its website available at <https://www.travelexinsurance.com/customer-service/travel-alerts/travel-supplier>.

Visit <https://travelexinsurance.com/docs/ny-phn-covid-19-comp> to view a special notice for NY residents regarding coverage related to COVID-19. Travel Insurance Services, Inc. CA Agency License #0D10209. Travel Insurance is underwritten by Berkshire Hathaway Specialty Insurance Company; NAIC #22276. 716

**\* Travel Protection Plan may be purchased any time before or with final payment to Regent Bank \***

## PASSENGER INFORMATION (2nd Traveler)

Full name must be exactly as it appears on your passport or passport application.  
Passport information may be sent later if you have yet to obtain a passport.

First Name: \_\_\_\_\_

Middle Name(s): \_\_\_\_\_

Last Name(s): \_\_\_\_\_

Preferred Name: \_\_\_\_\_ Gender (circle one): M F

Address: \_\_\_\_\_

City: \_\_\_\_\_ State: \_\_\_\_\_ Zip: \_\_\_\_\_

Preferred Phone: \_\_\_\_\_

Email: \_\_\_\_\_

Passport #: \_\_\_\_\_

Passport Expiration Date: \_\_\_\_\_ / \_\_\_\_\_ / \_\_\_\_\_  
month / day / year

Date of Birth: \_\_\_\_\_ / \_\_\_\_\_ / \_\_\_\_\_  
month / day / year

Dietary Needs: \_\_\_\_\_

Additional Special Requests/Needs: \_\_\_\_\_

Preferred Airport: \_\_\_\_\_

Emergency Contact: \_\_\_\_\_

Relationship: \_\_\_\_\_

Emergency Contact's Phone: \_\_\_\_\_

Please choose a stateroom:		(Double Occupancy) Trip Costs Per Person*
<input type="checkbox"/> <b>Cat. IB</b>	Inside Stateroom (160-254 sq ft)**	<b>\$2,745</b>
<input type="checkbox"/> <b>Cat. BA/BB</b>	Balcony Stateroom (231-358 sq ft)**	<b>\$3,059</b>
<b>Non-member price: add \$125 Are you a club member? _____</b>		

\*Tour cost subject to 3% credit card transaction fee.

\*\*Staterooms subject to availability at time of registration.

**Balcony Guests: Select all four options in ONE column**

**Inside Guests: Select two options in ONE column**

- |  |   |
|--|---|
| <b>Package 1:</b><br><input type="checkbox"/> <b>Premium Beverage Package</b><br>(Excludes \$138.60/person gratuities)<br><input type="checkbox"/> <b>Ultimate Dining Package</b><br>(2 nights' dining in specialty restaurants; excludes \$15.80/person gratuities)<br><input type="checkbox"/> <b>250-Minute Internet Package</b><br>(Per stateroom)<br><input type="checkbox"/> <b>\$50 Shore Excursion Credit</b><br>(Per stateroom, per port) | <b>Package 2:</b><br><input type="checkbox"/> <b>\$50 Shore Excursion Credit</b><br>(Per stateroom, per port)<br><input type="checkbox"/> <b>250-Minute Internet Package</b><br>(Per stateroom)<br><input type="checkbox"/> <b>10-Photo Package</b><br>(Per stateroom)<br><input type="checkbox"/> <b>\$100 Onboard Credit</b><br>(Per stateroom) |
|--|---|

**PLEASE TURN OVER FOR SIGNATURE**

# NORWEGIAN PRIMA CARIBBEAN CRUISE

**DOCUMENTATION:** Each U.S. citizen must have a valid passport through August 16, 2024, to participate. If you don't have a passport, call our office and we'll tell you how to apply for one. Holders of non-U.S. passports have different entry requirements. Please NOTE: Due to airline security measures, your passport name must match your airline ticket name and your tour reservation name or you may be denied aircraft boarding.

**OPTIONAL TRAVEL PROTECTION PLAN:** Regent Bank recommends that you purchase a Travel Protection Plan to help protect you and your travel investment against the unexpected so you can relax and enjoy your trip. Participants may purchase this coverage from the provider of your choice. For your convenience, we offer a Travel Protection Plan, 360° Group Premier provided by Travel Insurance Services, that helps provide coverage for trip cancellation/interruption, trip delay, baggage loss, theft or damage, medical expense and emergency evacuation coverage, and more. For more information, please see the product flyer included with this brochure. If you would like to purchase the offered plan, please check the applicable box on the registration form. Please Note: The plan cannot be purchased after final payment. To view/download the Policy, which provides the full coverage terms and details, including limitations and exclusions, go to: <https://policy.travelexinsurance.com/GPB-0521>. To view state specific fraud warnings, visit: <https://www.travelexinsurance.com/company/fraud-warning>. The purchase of this product is not required in order to purchase any other travel product or service. Your travel retailer might not be licensed to sell travel insurance and will only be able to provide general information about the product. An unlicensed travel retailer may not answer questions about the terms and conditions of the insurance offered and may not evaluate the adequacy of your existing insurance coverage. The products being offered provide insurance coverage that only applies during your covered trip. You may have insurance coverage from other sources that provide similar benefits but may be subject to different restrictions depending upon the coverage. You may wish to compare the terms of the travel policy offered through Travel Insurance Services with any existing life, health, home, and automobile insurance policies you may have. If you have questions about your coverage under your existing insurance policies, contact your insurer or insurance agent or broker. Travel Insurance Services, Inc. CA Agency License #0D10209. Travel Insurance is offered on behalf of and under the direction of Travel Insurance Services. Travel Insurance is underwritten by Berkshire Hathaway Specialty Insurance Company; NAIC #22276.7D4

**CANCELLATION:** Full refund of all monies is made if cancellation is received in writing to Regent Bank prior to final payment, less the non-refundable 3% credit card transaction fee (if a credit card is used). A 100% fee is charged if the cancellation occurs between final payment and departure. If the reason for cancellation is due to a medical or other reason that is covered by Travel Protection, you may be eligible for reimbursement for such fees from your Travel Protection Plan provider.

**TRAVELERS WITH SPECIAL NEEDS:** You must advise Star Destinations, Inc. (SDI) at the time of registration of any disability requiring special attention. SDI will make reasonable efforts to accommodate the special needs of travelers. The Americans with Disabilities Act is applicable only in the U.S., and accommodations outside the U.S. may be more limited. Travelers requiring assistance are required to be accompanied by a companion who is capable of, and totally responsible for, providing the assistance. Neither SDI personnel nor its suppliers may lift or physically assist with travelers' special needs including, but not limited to, walking, dining, or other routine activities. Travelers thinking they may need assistance should call SDI to determine what accommodations may reasonably be provided. Arrangements at an additional cost are the financial responsibility of the traveler.

**TERMS & CONDITIONS:** Star Destinations, Inc. (SDI) acts as an agent for suppliers such as airlines, hotels or activities to provide you with the travel services and accommodations. Although great care is taken in choosing suppliers, we are unable to control them and therefore cannot be held responsible or liable for their acts or omissions. Should a contracted supplier be unable to perform required services, SDI reserves the right to substitute advertised services with similar services. SDI is not responsible for any claims, losses, damages, costs or expenses arising out of injury, accident or death, damage, loss, trip delay or delay of baggage, or other inconvenience resulting from mechanical breakdowns, fire, theft, civil disturbances, government actions, weather, and other factors beyond our control. In the case of a pandemic or worldwide disturbance that interrupts or cancels your planned tour, SDI will do everything possible to retrieve any refundable components of your tour but cannot be held responsible for any non-refundable portions of the tour. In addition, SDI reserves the right to vary the tour price advertised or printed to cover any increase in air fare, volatile fuel prices, government taxes and charges, exchange rate fluctuations, or other tour-related tariffs or newly announced travel costs. In the current travel environment, pricing may be increased due to unexpected requirements for health and safety of tour members. Due to infectious diseases, including COVID-19, destination areas may implement restrictions and requirements that may add additional costs beyond our control. Be aware that any public interaction carries a risk of exposure to infectious diseases. Travelers assume personal risk upon tour registration, and SDI cannot be held responsible in the event of infectious disease exposure. If you request a variation or change to your booking, SDI may choose to accept or reject that request. If accepted, you are responsible for any fees associated with it. If the minimum number of passengers required to operate the tour is not met, SDI reserves the right to cancel the tour.

It is the sole discretion of SDI to refuse transport to any passenger, or require any passenger to leave the tour, if it is reasonably believed that the passenger (1) is dangerous to others or to himself or herself; (2) is engaged in, or is threatening to engage in behavior that may adversely affect the safety, security, enjoyment, or well-being of other passengers, including behavior that is disruptive, verbally or physically abusive, obnoxious, harassing, or obscene; or (3) has failed or refused to follow SDI's rules and procedures or the instructions of its representatives. In the event a passenger is removed, such passenger may be left at any location without any liability to SDI or its representatives. SDI shall not be required to refund any portion of the price paid by any passenger who is removed, nor shall SDI be responsible for any further expenses incurred by the passenger. SDI shall be entitled to recover from the passenger any costs or expenses incurred by SDI or its representatives in the removal of the passenger or the exercise or enforcement of this clause.

Sleeping Preference (circle one):      Two Beds      One Bed

Roommate (name): \_\_\_\_\_

**A \$500 deposit per person is required with your registration form in order to reserve your spot.**

**FINAL PAYMENT IS DUE: OCTOBER 2, 2023**

**A passport photocopy is required with registration or as soon as possible.**

## DEPOSIT PAYMENT INFORMATION:

Enclosed is my check, made payable to: Regent Bank

In the amount of: \_\_\_\_\_

Mail Check to: Regent Bank  
3271 E Battlefield Rd, Springfield, MO 65804

**CREDIT CARD PAYMENTS** (tour cost subject to 3% credit card transaction fee):  
(Please Note: The charge will appear on your statement as Star Destinations)

☐ Visa    ☐ Mastercard    In the amount of: \_\_\_\_\_

Credit Card Number: \_\_\_\_\_

Exp. Date: \_\_\_\_\_ / \_\_\_\_\_    Security Code: \_\_\_\_\_  
month / year

Name as it appears on card: \_\_\_\_\_

By registering for this tour and signing below, **you acknowledge that Regent Bank reserves the right to refuse transport at any time to any passenger who does not meet the activity level requirements listed.** Neither Regent Bank nor Star Destinations will be required to refund any portion of the price paid by any passenger who is removed in enforcement of this clause.

Signature (1st Traveler): \_\_\_\_\_

Date: \_\_\_\_\_

Please initial to indicate you have read/agree to the terms and conditions: \_\_\_\_\_

American Airlines Frequent Flyer #: \_\_\_\_\_

KTN #: \_\_\_\_\_

Have you cruised with NCL in the past? ☐ YES ☐ NO

If yes, please include your Latitudes Rewards number (if known): \_\_\_\_\_

## Activity Level: Minimal to Moderate

In order to participate in this tour, **you must:**

- Be able to walk/stand 2-3 hours at a time at a moderate pace in all weather conditions
- Be able to maneuver some stairs, inclines, and uneven surfaces without assistance

Signature (2nd Traveler): \_\_\_\_\_

Date: \_\_\_\_\_

Please initial to indicate you have read/agree to the terms and conditions: \_\_\_\_\_

American Airlines Frequent Flyer #: \_\_\_\_\_

KTN #: \_\_\_\_\_

Have you cruised with NCL in the past? ☐ YES ☐ NO

If yes, please include your Latitudes Rewards number (if known): \_\_\_\_\_

By registering for this trip, I agree to grant to Star Destinations and its authorized representatives permission to record on photography film and/or video, pictures of my participation. I further agree that any or all of the material photographed may be used, in any form, as part of any future publications, brochure, or other printed or digital materials used to promote Star Destinations, and further that such use shall be without payment of fees, royalties, special credit or other compensation.





## PLAN BENEFITS & BONUS COVERAGES

Benefits	Coverage <sup>1</sup>
Trip Cancellation	100% of trip cost (\$20,000 limit)
Trip Interruption	150% of trip cost (\$30,000 limit)
Trip Delay <sup>8</sup>	\$1,000 (\$250/day)
Sporting Equipment Delay	\$200
Missed Connection	\$1,000
Baggage & Personal Effects	\$1,500
Baggage Delay	\$250
Emergency Medical & Dental Expenses	\$50,000 (\$500 dental sublimit)
Emergency Evacuation & Repatriation	\$250,000
Accidental Death & Dismemberment <sup>5</sup>	\$10,000
Travel Assistance & Concierge Services <sup>7</sup>	Included

### BONUS COVERAGES

If plan is purchased at or before final trip payment.

• Pre-existing Medical Condition Exclusion Waiver	Included
• Financial Default Coverage	Included

## 360° GROUP PREMIER

### TRAVEL PROTECTION

The 360° Group Premier plan provides maximum travel protection for all ages at competitive group rates. Enjoy benefits like trip cancellation & interruption, emergency medical and 24/7 travel assistance & concierge services.

### PLAN HIGHLIGHTS

- Primary coverage, no deductibles
- Pre-existing medical condition exclusion waiver<sup>3</sup>
- Trip cancellation/interruption benefit includes:
  - Sickness, injury or death<sup>4</sup>
  - Inclement weather
  - Financial default<sup>3</sup> & labor strikes
  - Business reasons
  - Terrorist incident
- 3 hour missed connection benefit
- 5 hour trip delay benefit
- 12 hour baggage delay benefit
- Fast online claims<sup>6</sup>

### PLAN RATES

Trip Cost	Age 25+
\$0 <sup>2</sup>	\$43
\$1 - \$500	\$80
\$501 - \$1,000	\$116
\$1,001 - \$1,500	\$160
\$1,501 - \$2,000	\$207
\$2,001 - \$3,000	\$280
\$3,001 - \$4,000	\$370
\$4,001 - \$5,000	\$464
\$5,001 - \$6,000	\$552
\$6,001 - \$7,000	\$644
\$7,001 - \$8,000	\$736
\$8,001 - \$9,000	\$826
\$9,001 - \$10,000	\$916
\$10,001 - \$11,000	\$1,038
\$11,001 - \$12,000	\$1,135
\$12,001 - \$13,000	\$1,232
\$13,001 - \$14,000	\$1,329
\$14,001 - \$15,000	\$1,426
\$15,001 - \$16,000	\$1,524
\$16,001 - \$17,000	\$1,623
\$17,001 - \$18,000	\$1,721
\$18,001 - \$19,000	\$1,819
\$19,001 - \$20,000	\$1,918

Rates are per traveler and subject to change. Contact the agency for rates under 25 years of age.

<sup>1</sup> All coverages per insured up to limits listed. Coverage, rates and maximum trip length may vary by state. Please see your policy for details or call 888.574.7026. <sup>2</sup> Includes \$1,000 in Trip Interruption - Return Air only. Coverage for Trip Interruption and Trip Interruption - Return Air Only cannot be combined. <sup>3</sup> Coverage when plan is purchased at or before final trip payment. <sup>4</sup> Of you, a Traveling Companion, Family Member or Business Partner. <sup>5</sup> Not available for NH residents. <sup>6</sup> Based on industry average. Fastest payment on approved claims is based on 'electronic payment' of claim. <sup>7</sup> Provided by the designated provider as listed in the Policy. <sup>8</sup> \$200/day for IL residents 09.21

## TRAVEL ASSISTANCE SERVICES<sup>7</sup>

Includes a wide range of services before and during trips through a 24/7 toll free number.

### MEDICAL SERVICES INCLUDE:

- Medical Assistance
- Medical Consultation & Monitoring
- Medical Evacuation
- Emergency Medical Payments
- Prescription Assistance
- Dependent Transportation & Family Visits
- Repatriation of Remains

### ASSISTANCE SERVICES INCLUDE:

- 24 Hour Legal Assistance
- Message Services
- Language Interpretation Services
- Emergency Cash Transfer
- Pre-Trip Travel Services
- Travel Document & Ticket Replacement
- Concierge Services
- Business Services

### PRE-EXISTING CONDITION EXCLUSION WAIVER

Pre-existing medical conditions are eligible for coverage when:

- Plan is purchased at or before final trip payment
- Full trip cost is insured
- The traveler is medically able to travel at the time of plan purchase

A pre-existing condition is an Injury, Sickness or other condition (excluding any condition from which death ensues) of an Insured, Traveling Companion, Business Partner or Family Member within the 60 day period immediately preceding and including the Insured's coverage effective date.

This exclusion also applies to those not traveling.

This plan does not cover any loss caused by or resulting from: intentionally self-inflicted Injury, suicide, or attempted suicide of the Insured, Family Member, Traveling Companion or Business Partner while sane or insane; Normal Pregnancy or Childbirth, other than Unforeseen Complications of Pregnancy, of the Insured, a Traveling Companion or a Family Member; participation in professional athletic events; motor sport, or motor racing, including training or practice for the same; mountain climbing that requires the use of equipment such as; pick-axes, anchors, bolts, crampons, carabineers, and lead or top-rope anchoring or other specialized equipment; operating or learning to operate any aircraft, as student, pilot, or crew; air travel on any air-supported device, other than a regularly scheduled airline or air charter; war (whether declared or not) or act of war, participation in a civil disorder, riot, insurrection or unrest; any unlawful acts committed by the Insured; Mental, Nervous or Psychological Disorder; if the Insured's tickets do not contain specific travel dates (open tickets); being under the influence of drugs or narcotics, unless administered upon the advice of a Physician or intoxication above the legal limit; any Loss that occurs at a time when this coverage is not in effect; traveling solely or substantially for the purpose of securing medical treatment; any Trip taken outside the advice of a Physician; Pre-Existing Medical Conditions of an Insured, Traveling Companion, Business Partner or Family Member (within a 60 day period immediately preceding coverage effective date). The following exclusions also apply to the Medical Expense Benefit: routine physical examinations; mental health care; replacement of hearing aids, eye glasses, contact lenses, sunglasses; routine dental care; any service provided by the Insured, a Family Member, or Traveling Companion; alcohol or substance abuse or treatment for the same; Experimental or Investigative treatment or procedures; care or treatment which is not Medically Necessary, except for related reconstructive surgery resulting from trauma, infection or disease; coverage for Trips less than 100 miles from the Insured's Primary Residence (also applies to the Emergency Evacuation Benefit). The following exclusions also apply to Accidental Death and Dismemberment: Benefits will not be provided for the following: loss caused by or resulting directly or indirectly from Sickness or disease of any kind; stroke or cerebrovascular accident or event; cardiovascular accident or event; myocardial infarction or heart attack; coronary thrombosis; aneurysm. Please refer to your policy for a complete list of plan exclusions and limitations. The purchase of this product is not required in order to purchase any other travel product or service. Your travel retailer might not be licensed to sell travel insurance and will only be able to provide general information about the product. An unlicensed travel retailer may not answer questions about the terms and conditions of the insurance offered and may not evaluate the adequacy of your existing insurance coverage. The products being offered provide insurance coverage that only applies during your covered trip. You may have insurance coverage from other sources that provide similar benefits but may be subject to different restrictions depending upon the coverage. You may wish to compare the terms of the travel policy offered through Travellex with any existing life, health, home and automobile insurance policies you may have. If you have questions about your coverage under your existing insurance policies, contact your insurer or insurance agent or broker. The product descriptions provided here are only brief summaries and may be changed without notice. The full coverage terms and details, including limitations and exclusions, are contained in the insurance policy. If you have questions about coverage available under our plans, please review the policy or contact Travellex Insurance Services Inc. Toll Free 888.574.7026 Email: [customersolutions@travellexinsurance.com](mailto:customersolutions@travellexinsurance.com). Any inquiry regarding claims may be directed to [travellex.claims@bhspecialty.com](mailto:travellex.claims@bhspecialty.com); 855.205.6054. To view state specific fraud warnings, visit [travellexinsurance.com/company/fraud-warning](http://travellexinsurance.com/company/fraud-warning). Consumers in California may also contact: California Department of Insurance Hotline 800.927.4357 or 213.897.8921. Travellex Insurance Services, Inc. CA Agency License #0D10209. Consumers in Maryland may contact: Maryland Insurance Administration 800.492.6116 or 410.468.2340. Travel Insurance is underwritten by Berkshire Hathaway Specialty Insurance Company; NAIC #22276 under Policy Form series (all states except as otherwise noted) PG-TA-IPL-USE. In KS, MA, MN, MO, MT, OR, VA, and VT Policy Form series PG-TA-IPL-NV. In CA Policy Form # PG-TA-IPL-USEIM and PG-TA-IPL-CAEAH, CO Policy Form # PG-TA-IPL-COEAH and PG-TA-IPL-COEIM, IL Policy Form # PG-TA-IPL-ILE, IN Policy Form # PG-TA-IPL-INEAH and PG-TA-IPL-NVIM, MD Policy Form # PG-TA-IPL-MDE, NH Policy Form # PG-TA-IPL-NHE, NY Policy Form # PG-TA-IPL-NVIM and PG-TA-IPL-NVAH-NY, PA Policy Form # PG-TA-IPL-USEIM and PG-TA-IPL-NVAH-PA, TX Policy Form # PG-TA-IPL-TXEAH and PG-TA-IPL-TXEIM, UT Policy Form # PG-TA-IPL-UTE, WA Policy Form # PG-TA-IPL-NVIM and PG-TA-IPL-WAEAH. SDH 09.21



For plan questions call Travellex at 888.574.7026 or  
Contact your Travel Professional to Enroll:  
Plan # GPB-0521

### VIEW PLAN DETAILS

View your policy: [policy.travellexinsurance.com/GPB-0521](http://policy.travellexinsurance.com/GPB-0521)



**Travellex Insurance Location Number: 15-0153**

**PO Box 456 / 1903 N US Hwy 71 / Carroll, IA 51401**

**Office 800-284-4440 or 712-792-9793**

**[www.stardestinations.com](http://www.stardestinations.com)**



**Dream. Explore.  
Travel On.**